



## ONLINE MEASURING DEVICE LTMD 2-4-HC

L & S Luddeneit und Scherf GmbH  
Wimmlerstraße 25  
D-07806 Neustadt an der Orla  
GERMANY

[www.l-und-s.de](http://www.l-und-s.de)

Tel.: +49-36481-5645-0  
Fax: +49-36481-5645-19



The LTMD 2-4-HC is an efficient solution for continuous measurement on tracks as well as for continuous or point measurement in switches. The online measuring device LTMD 2-4-HC can be used for grooved rails and standard Vignol rails in track systems with track gauges 900-1435 mm and enables simultaneous measurement of the left and right rails. The following measuring methods are integrated:

- Rail head transverse profile
- Rail head longitudinale profile
- Eddy current testing
- Track gauge measurement

The online measuring device can be coupled to a rail vehicle directly. It can be controlled by defined reference points on the rail automatically.

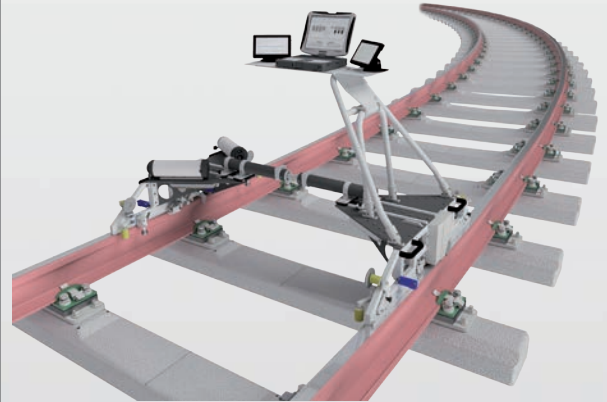
The LTMD 2-4-HC has a standard USB interface. The measurement data is stored in the form of raw data and printable files on hard disk and USB stick and can be sent directly via Bluetooth or e-mail.

The measurements are recorded and calculated in accordance with the applicable EN standards.

# Technical data of LTMD 2-4-HC with online touch panel

## Device operation data

Length x width x height	1.150 x 1.150 x 850 mm
Weight	60 kg
Operating time	8 hours
Temperature operating range	-10 °C to +65 °C
Data storage	400 km
Trolley measuring speed	1-10 km/h
Protection class	IP65
Monitors	2x Panasonic „Toughbook“ 10,1 Zoll
Operating system	Windows 10
Data transmission	via USB, Bluetooth, E-Mail
Accessories:	Transport case Calibration tools DIN1319



## Details of the integrated measurement methods

### Transverse profile measurement

Measurement methods	.....	contactless, laser-based
Horizontal detection zone	.....	≤ 100 mm
Horizontal resolution	.....	0,1 mm
Vertical detection zone	.....	50 mm
Vertical accuracy	.....	≤ 0,01 mm
Scan frequency	.....	2000 Hz
Recording time per measurement (including pdf-creation)	.....	≤ 1 sec
Standard	.....	EN 13231

### Longitudinal profile measurement

Data evaluation	.....	4 wave ranges, separately evaluable
Measurable wave lengths	.....	10-30/30-100/ 100-300/300-1000 mm
Vertical measuring range	.....	-3,5 to +2,5 mm
Measuring point distance	.....	2 mm
Measurement accuracy	.....	≤ 0,005 mm
Running band adjustment	.....	flexibel / continuous
Standard	.....	EN 13231

### Eddy current testing

Number of test channels	.....	4 per rail
Inspection angle	.....	+7°, +11°, +21°, +45°
Inspection speed	.....	up to 10 km/h
Standard	.....	EN 16729

### Track gauge measurement

Possible track gauges	.....	900 /1000 /1435 mm
Measuring ranges	.....	preset track gauge (± 35 mm)
Measurement accuracy	.....	≤ 0,1 mm



## DEVELOPMENT - DESIGN - MANUFACTURING - SALE - SERVICE

L&S Luddeneit und Scherf GmbH  
Wimmlerstraße 25  
D- 07806 Neustadt an der Orla - Germany

Tel.: +49 (0) 36481-5645-0  
Fax: +49 (0) 36481-5645-19